



Contact: Blake Kidner - E: blake.kidner@kidnercontracting.com.au
 T: 07 4097 6766 F: 07 4097 6767
 3 Carrick Street, Ravenshoe, Queensland 4888



Used 1999 Mack

\$60,000 AUD*

CHR ELITE HEAVY DUTY

Product Details

Item Condition	Fair	Differential	mack
Colour	white	Serial Number	6FMG24E02AXB05266
Stock Number	009-2	GCM	80000
Odometer	275000	GVM	23510
Axle Configuration	6x4	Registration	026FMW
Brakes	drum	Suspension	camel back
Coupling	jost		

Description

1 Owner, 1 Driver, MACK CHR Elite Heavy Duty 470HP, NEW JOST Turn Table, Co-Pilot, Road Train To 80,000KG, full engine rebuild at 800 000km includes Injectors, Pistons, Slevs Bearings.
 Tare:9500, GVM:23510, GCM:70000, RBCM:79000
 18 Speed Mack Box, Camel Back Suspension, 4.17 Diffs, Ralle 4000 Spot Lights, Steel H/D Bull Bar, LED Tail Lights, Tool Box, 2 Rotating Beacons, MP3 Player, GME UHF, PTO, Hydraulics.
 New Intercooler
 Road Train Signage.
 \$60000+GST
 \$66000

Engine

Engine Make	mack EA7
Engine Number	EA7470801109
Fuel Capacity	1000
Engine Power	470
Fuel Type	Diesel

Tyres & Wheels

Condition Front	good
Condition Rear	good
Size Front	295
Size Rear	22.5

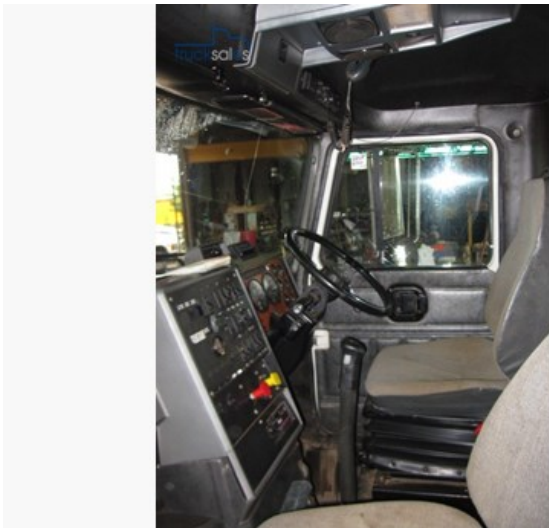
Cabin Features

Air Conditioning	yes
Radio	UHF
Sleeping quarters	36" LRP
Speed Limiter	100
Stereo	MP3

Accessories

Bull bar	steel
Lighting	Ralle 4000
Wind Deflector	yes

Photos





Created on 05/09/2014

*If the price does not contain the notation that it is "Drive Away No More To Pay", the price may not include additional costs, such as stamp duty and other government charges. Please confirm price and features with the seller.